

FURGUT

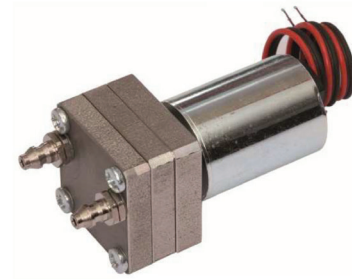
Rotary Vane Pump Model DC/04/20

3VDC to 24VDC Powered Rotary Vane Pumps, Gas Flow to 2 LPM

DESCRIPTION

This rotary vane pump series is an excellent pressure/vacuum source for gas analyzers, medical devices, process samplers and other analytical instrument applications. Also useful for material handling and many general automation applications with Non-Toxic and Non-Explosive gases.

The pump is quiet, reliable and mounts in any position. The units operate oil free. The pump vanes have an estimated service life of 1,000 hours and are easily field replaced without special tools.

**FEATURES**

- Minimal noise during use.
- Consistent and dependable functionality.
- Can be installed in any position.
- Clean and maintenance-free.
- Vane replacement without special tools, with a service life of 1,000 hours.

APPLICATIONS

- Gas Analyzers: Providing precise pressure and vacuum.
- Medical Devices: Supporting diagnostic equipment.
- Process Samplers: Ensuring accurate sample collection.
- Material Handling: Facilitating smooth material transfer.
- Automation Systems: Enhancing automated machine operations.

SPECIFICATIONS**GENERAL**

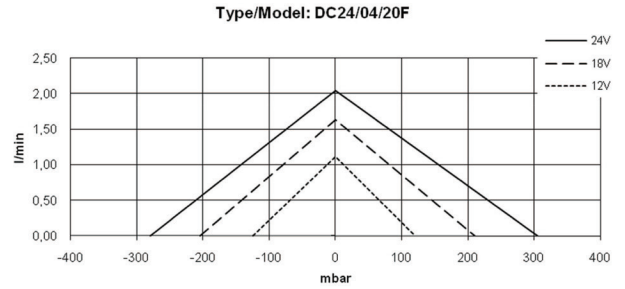
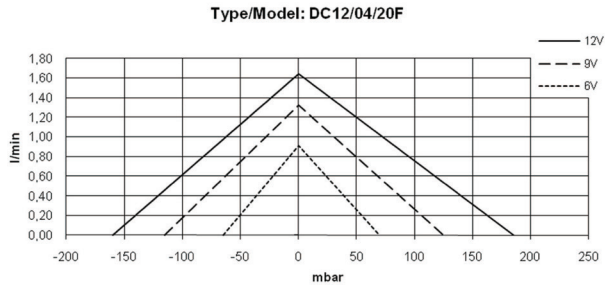
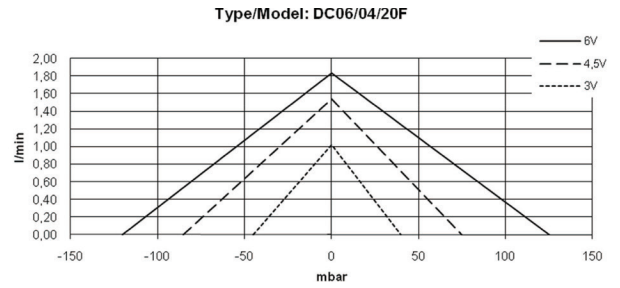
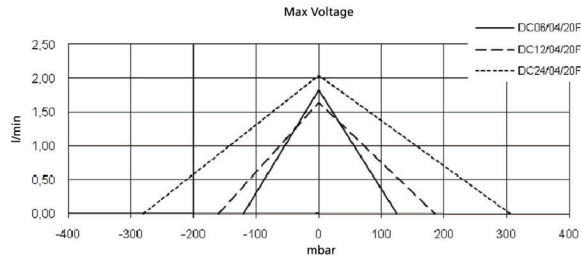
Maximum Flow	2 LPM
Maximum Differential pressure	305 mbar
Vane Material	Carbon
Media	inert gases
Weight	57g

Note:

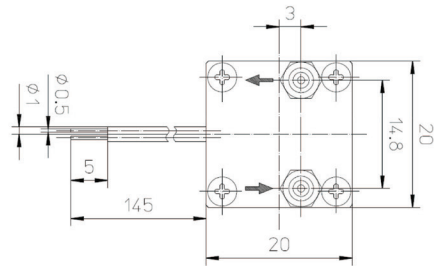
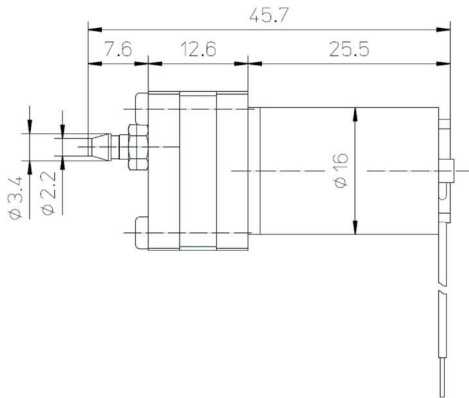
** Operation at a somewhat lower than pump design voltage will yield a significantly longer life of the motor and the pump while also decreasing the current draw and operating noise of the unit.

** If used for continuous operation, we recommend selection of a pump that has a slightly higher pumping capacity than needed during normal operation.

FLOW RATE PERFORMANCES



DIMENSIONS (MM)



ORDERING INFORMATION

Model/ Order Code	Current mA	Voltage (V)	Max. Flow (L/min)	Vacuum				Pressure				Weight (g)
				Current		Vacuum (mbar)	Noise Level dB(A)	Current		[+] (mbar)	Noise Level dB(A)	
				Min mA	Max mA			Min mA	Max mA			
DC06/04/20F Art.-Nr.: 13300	370	6,0	1,8	205	300	120	60	205	320	125	63	57
		4,5	1,5	145	225	85	57	145	230	75	58	
		3,0	1,0	85	140	45	49	85	145	40	51	
DC09/04/20F Art.-Nr.: 14712	320	9,0	1,7	160	295	235	61	160	295	245	60	
		7,5	1,3	115	225	175	60	115	215	170	56	
		4,5	0,9	70	135	90	55	70	120	90	51	
DC12/04/20F Art.-Nr.: 15317	250	12,0	1,6	130	190	160	72	130	205	185	63	
		9,0	1,3	90	145	115	64	90	150	125	59	
		6,0	0,9	55	90	65	61	55	70	70	54	
DC24/04/20F Art.-Nr.: 16312	140	24,0	2,0	95	155	280	67	100	170	305	65	
		18,0	1,6	70	115	205	63	70	120	210	60	
		12,0	1,1	45	75	125	56	50	80	120	55	